



Weston  
Primary School

# School NEWS



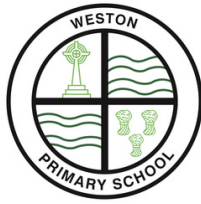
We have all had a great week this week in school from our crazy assembly with the Mad Scientist to welcoming Mr Kelly and Mr Helsby back from precious time with their new babies.

Today was especially exciting with each and every child receiving a reflective keyring from our new safety officers. These can be worn on coats or on school bags to help keep children safe on their way to and from school.

We have also started collecting for the Runcorn Foodbank as part of our Harvest Festival preparations- please bring donations to school.

Don't forget to check out this week's stars!

Enjoy your weekend!

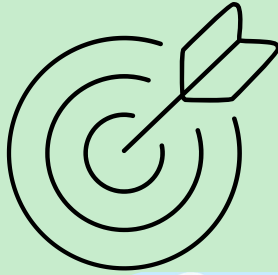


# ATTENDANCE MATTERS

*MOMENTS MATTER, ATTENDANCE COUNTS*



ON TIME, IN SCHOOL



**TARGET +97%**

**WHOLE  
SCHOOL 94.4%**

**ATTENDANCE THIS WEEK**

**EYFS + KS1 WINNERS = YEAR 2 = 97.6 %**

**KS2 WINNERS = YEAR 4 = 96.9 %**

**CONGRATULATIONS TO OUR ATTENDANCE WINNERS THIS WEEK**



**WE HAVE STARTED COLLECTING  
FOR THE RUNCORN FOODBANK AS  
PART OF OUR HARVEST FESTIVAL  
PREPARATIONS- PLEASE BRING  
DONATIONS TO SCHOOL.**

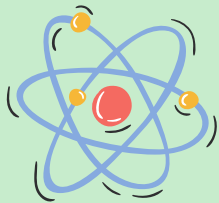




Weston  
Primary School



# MAD SCIENCE



WE WERE INSPIRED  
BY THE  
MAD SCIENTIST  
THIS WEEK!

Stars of the Week!



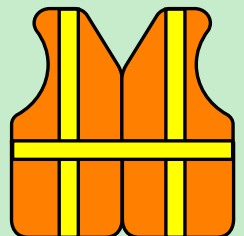




# Safety Officer Update



**WE HOPE THEY LIKE THEM!**

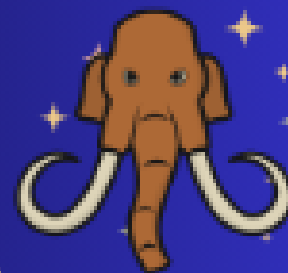
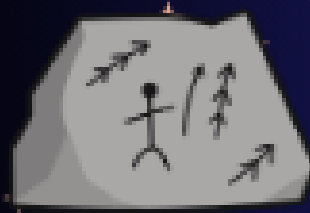


# Be Safe, Be Seen! !





**BUT DON'T WORRY IF YOU HAVEN'T  
GOT A PLACE ON THIS ONE. WE  
WILL BE ORGANISING ANOTHER  
WHICH WILL BE OPEN TO PUPILS  
WHO DIDN'T GET IN THIS TIME  
AROUND**

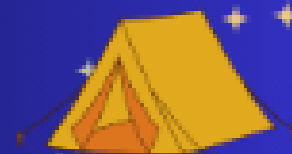


Year 3

## Stone Age Sleepover

Thursday 16<sup>th</sup> October to Friday 17<sup>th</sup>  
October

£15 per pupil

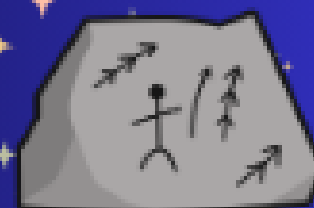
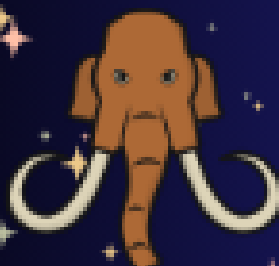


An evening of  
prehistoric fun and  
camp over in the  
school hall!  
Food, snacks and  
entertainment  
provided!

Evening Menu  
Stone Age Stew (hot  
Pot!)

Prehistoric Pizza  
(margherita or  
Pepperoni!)

Cooked Sticks (Chips!)  
Choice of Dessert

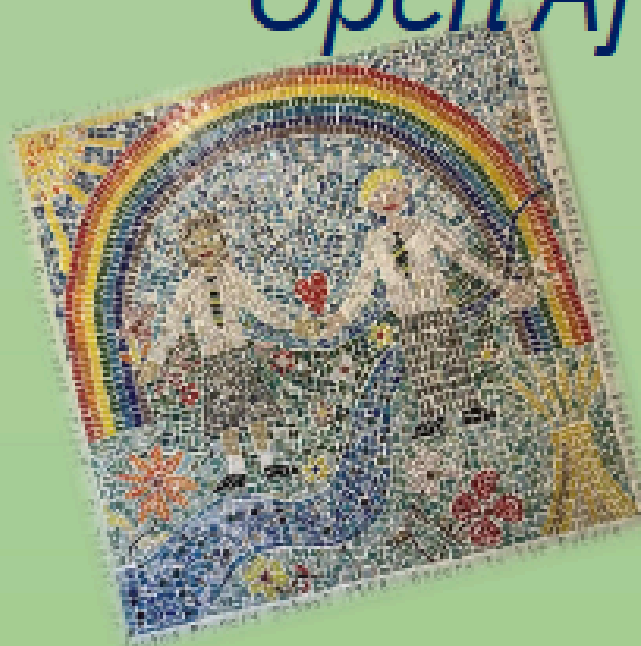


# Weston Primary School

*'Working, Enjoying, Succeeding Together'*

*Invites prospective parents for children starting  
Reception in September 2026 to our*

## *Open Afternoon*



*Tuesday 21<sup>st</sup> October or Thursday 6th  
November from 1.30pm to 2.45pm*

**Please contact the school office to  
book your guided tour**

Weston Primary School  
Lambstickle Lane  
Weston Village  
Runcorn  
01928 574544

Email:  
[enquiries@weston.halton.sch.uk](mailto:enquiries@weston.halton.sch.uk)  
Website: [www.weston.halton.sch.uk/](http://www.weston.halton.sch.uk/)







# HALTON SEND

Important Information



## PARENT CARER ADVICE / SUPPORT

### 1 Halton Send Parent Carer's Forum



A voice to inform families with children with additional needs of the services in our local area which may be beneficial to your child.

[www.haltonsendcarersforum.org.uk](http://www.haltonsendcarersforum.org.uk)

### 2 ADDvanced Solutions



An open access offer that supports the emotional health and wellbeing of neurodivergent children and young people, their families and the professionals that work with them.

[www.addvancedsolutions.co.uk](http://www.addvancedsolutions.co.uk)

### 3 Halton Carer's Centre



Halton Carers' Centre is a network partner of the Carers Trust. We work to reach unpaid young & adult carers and develop services for them across the borough.

[www.haltoncarers.co.uk](http://www.haltoncarers.co.uk)

## SIGNPOST FOR HALTON



### 1 Bridgewater



Bridgewater Community Healthcare NHS Foundation Trust. Here you will find information about all of Halton's Health services

[www.bridgewater.nhs.uk/halton/](http://www.bridgewater.nhs.uk/halton/)

### 2 Sendiass



If you need some advice, guidance or support on any issues that are affecting you or your child then we're here to help. We provide impartial and confidential information and support.

[www.sendiasshalton.co.uk/](http://www.sendiasshalton.co.uk/)

### 3 Family Hubs



A one stop digital platform for Halton residents to use to find services, events, support groups and advice

[www.haltonfamilyhubs.co.uk/](http://www.haltonfamilyhubs.co.uk/)



## SUPPORTING CHILDREN'S MENTAL HEALTH



### 1 MHST

[www.merseycare.nhs.uk](http://www.merseycare.nhs.uk)

Our Mental Health Support Team provides direct mental health support to 45 schools in Halton. We promote the early detection and prevention of mental health problems, strengthen links with mental health services, providing direct, ongoing support around mental health and wellbeing across the whole school.



### 2 KOOOTH

[www.kooth.com](http://www.kooth.com)

Kooth is a free digital safe and anonymous platform for support for young people. They have wellbeing activities, journals, discussion boards, tips and a free Chat and messenger option for young people to talk to someone.



### 3

CAMHS

[www.merseycare.nhs.uk](http://www.merseycare.nhs.uk)

Headz Up Halton drop-in hub  
An informal drop-in café where young people up to 18 years, parents and carers can drop by to speak with a mental health professional for assessment, advice and signposting to local services.  
Tues- Brookvale / Thursday Warrington Rd

**This document can be found on our school website on the 'SEND Information' page**



## Dates for Autumn



**Tuesday 6 October – Harvest Assembly**

**Wednesday 15<sup>th</sup> October – School Photos**

**Thursday 16<sup>th</sup> October – Y3 Stone Age Camp – School Sleepover (more info to follow)**

**Monday 20<sup>th</sup> and Wednesday 22<sup>nd</sup> SEND only Parents Evening**

**Tuesday 21<sup>st</sup> October – Open Afternoon for prospective parents 2026 intake**

**Wednesday 22<sup>nd</sup> October – Meet your buddy afternoon**

**Thursday 23<sup>rd</sup> October – Halloween House Day – wear your house colours OR fancy dress for some spooky team activities and disco with DJ Helsby!**

**Thursday 23<sup>rd</sup> October – SCHOOL CLOSSES at normal time**

**24<sup>th</sup> Oct to 2<sup>nd</sup> Nov – HALF TERM**

**Monday 3<sup>rd</sup> Nov – School Opens**

**Thursday 6<sup>th</sup> November - Open Afternoon for prospective parents 2026 intake**

**Mon 17<sup>th</sup> to Fri 21<sup>st</sup> Nov – Kindness Week**

**Mon 17<sup>th</sup> Nov – B Tales Performance**

**Mon 17<sup>th</sup> Nov and Wed 19<sup>th</sup> Nov – Parents Evening**

**Friday 21<sup>st</sup> November – Buddy day – details to follow as parents invited**

**Thursday 27<sup>th</sup> November – Y5 and 6 Advent Performance 2pm and 5pm**

**Tuesday 2<sup>nd</sup> December – Advent Assembly with Hope Corner**

**Thursday 4<sup>th</sup> December – Year 3 and 4 Christmas Performance 2pm and 5pm**

**Friday 5<sup>th</sup> December – Christmas Jumper Day**

**Monday 8<sup>th</sup> December – KS 2 Christmas Church Service**

**Thursday 11<sup>th</sup> December – Y1 and 2 Christmas Nativity 10am and 2pm**

**Friday 12<sup>th</sup> December – Christmas Jumper Day**

**Monday 15<sup>th</sup> December – Choir Carols around the village – 2.30pm to 3.10pm**

**Tuesday 16<sup>th</sup> December – Rec Christmas Nativity 10am and 2pm**

**Wednesday 17<sup>th</sup> December – B Tale Performance, Xmas Dinner and Party Day – Own Clothes Day**

**Thursday 18<sup>th</sup> December – Christmas House Day and Family Carols Around the Tree – details to follow**

**Friday 19<sup>th</sup> December – Breakfast with Santa**

**Friday 19<sup>th</sup> December – SCHOOL CLOSSES 1.30pm**

